

CRANE

Link-Belt HTC-8690
100' Main Boom (Mode EM2) at 67.5°
Base: 100% Outriggers
Counterweight: 29500 lbs
34.2' Lift Radius (360°)
Crane Capacity at 34.2' = 33,300 lbs

LOAD

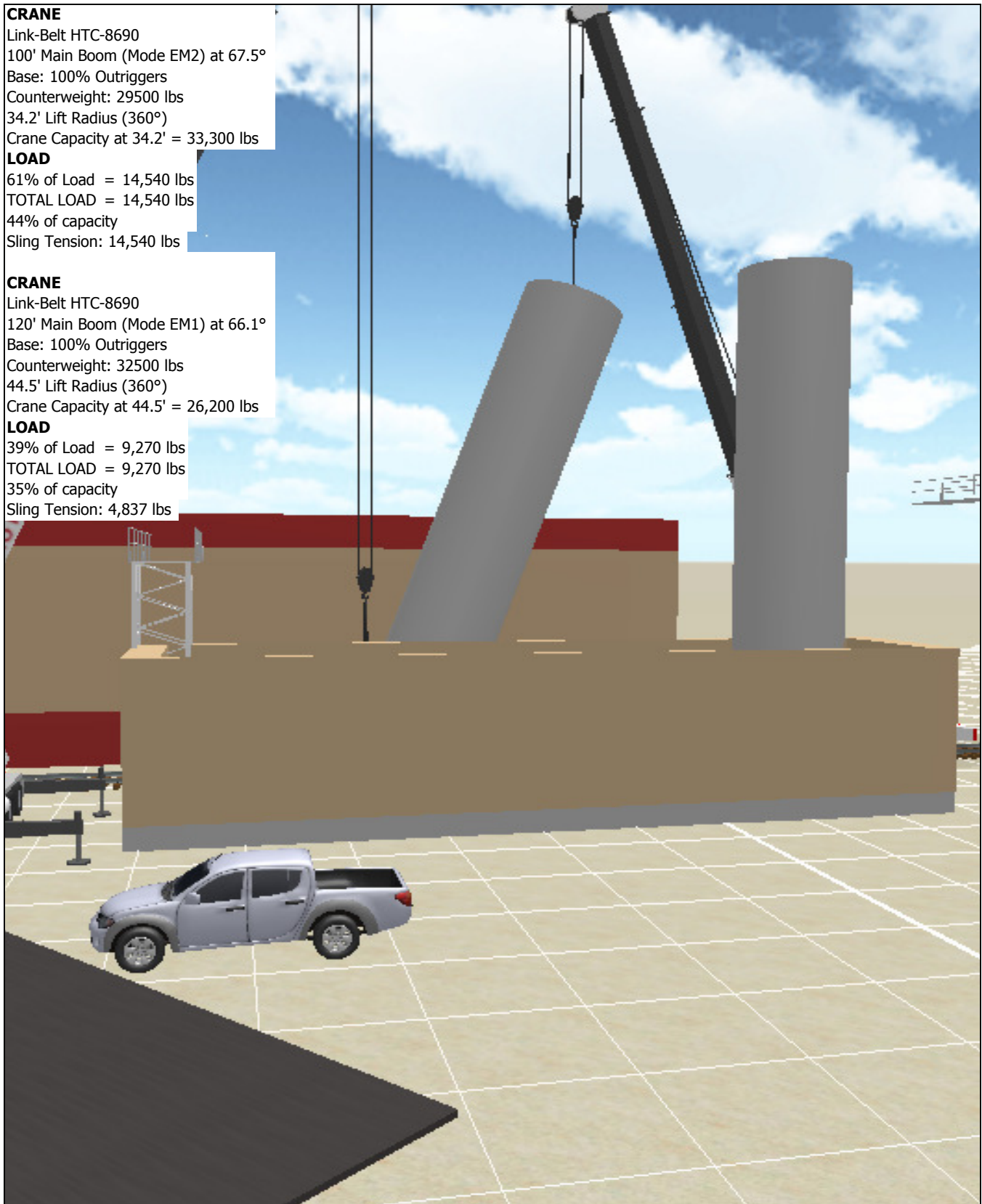
61% of Load = 14,540 lbs
TOTAL LOAD = 14,540 lbs
44% of capacity
Sling Tension: 14,540 lbs

CRANE

Link-Belt HTC-8690
120' Main Boom (Mode EM1) at 66.1°
Base: 100% Outriggers
Counterweight: 32500 lbs
44.5' Lift Radius (360°)
Crane Capacity at 44.5' = 26,200 lbs

LOAD

39% of Load = 9,270 lbs
TOTAL LOAD = 9,270 lbs
35% of capacity
Sling Tension: 4,837 lbs



Not issued for construction. For pre-planning only.

Grid: 10' x 10'



Title: Lift Plan
Project: OK Spring Brewery
Customer: Guy Harding
Description: Install New Vessels
Drawn By: Greg Nachtegaele

1/31/2013