

CRANE

Link-Belt HTC-8690
100' Main Boom (Mode EM2) at 67.5°
Base: 100% Outriggers
Counterweight: 29500 lbs
34.2' Lift Radius (360°)
Crane Capacity at 34.2' = 33,300 lbs

LOAD

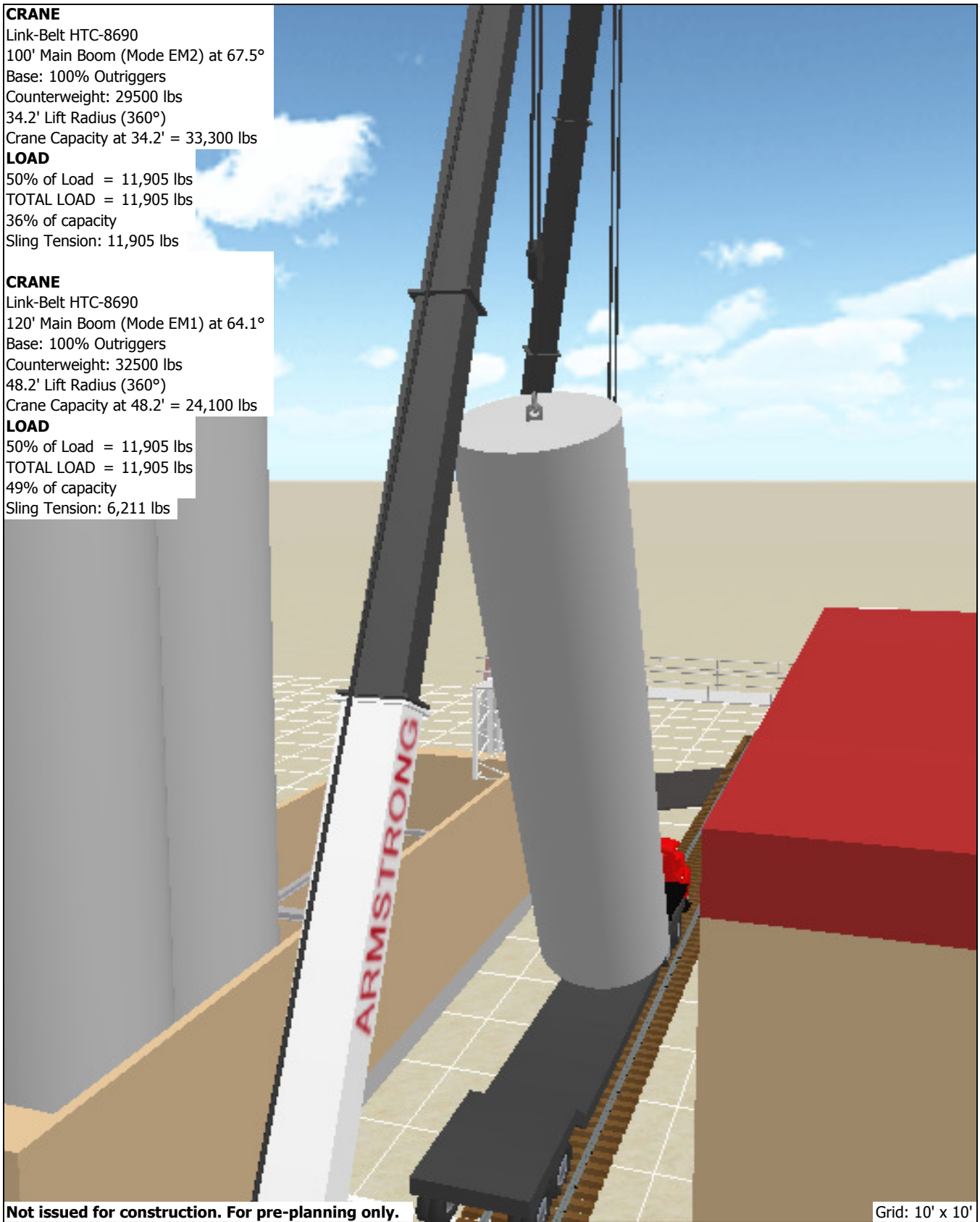
50% of Load = 11,905 lbs
TOTAL LOAD = 11,905 lbs
36% of capacity
Sling Tension: 11,905 lbs

CRANE

Link-Belt HTC-8690
120' Main Boom (Mode EM1) at 64.1°
Base: 100% Outriggers
Counterweight: 32500 lbs
48.2' Lift Radius (360°)
Crane Capacity at 48.2' = 24,100 lbs

LOAD

50% of Load = 11,905 lbs
TOTAL LOAD = 11,905 lbs
49% of capacity
Sling Tension: 6,211 lbs



Not issued for construction. For pre-planning only.

Grid: 10' x 10'



Title:	Lift Plan
Project:	
Customer:	
Description:	Install New Vessels
Drawn By:	Greg Nachtegale
	1/31/2013